

Technical Tip of the Week

Customer Support Help Desk



E1000 HMI Ethernet connection to multiple PLCs		
Product(s)	E1000 HMIs	Any version
	FX3U & and Q PLC	Any Version
Prepared	24 th March 10 by Andy Brown	Tip No. 46
Summary	With one Ethernet driver, it is possible to communicate with several PLCs at the same time.	

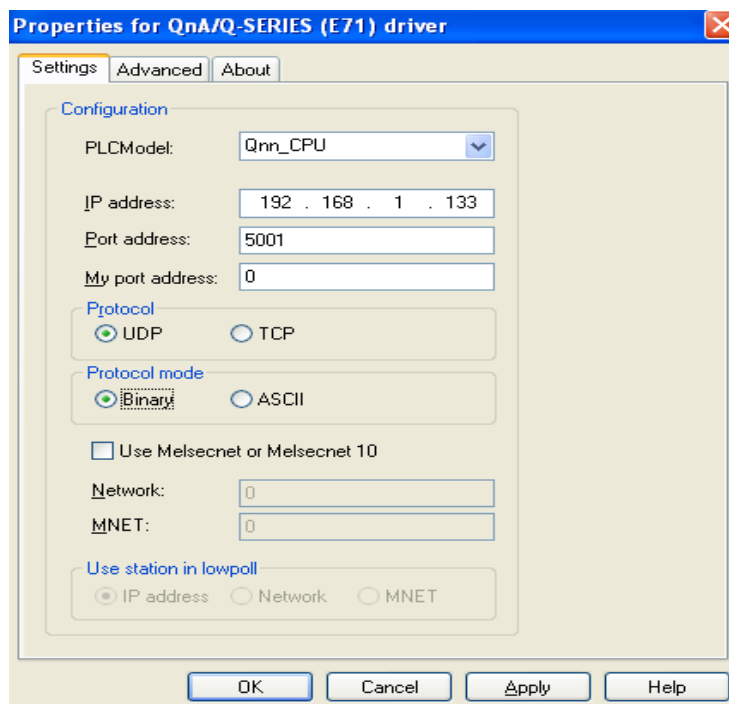
Introduction

The E1000 HMI range of HMIs supports Ethernet drivers for both FX3U and Q series PLCs. Both of these drivers support the facility of communicating with multiple PLCs through the one driver as detailed below.

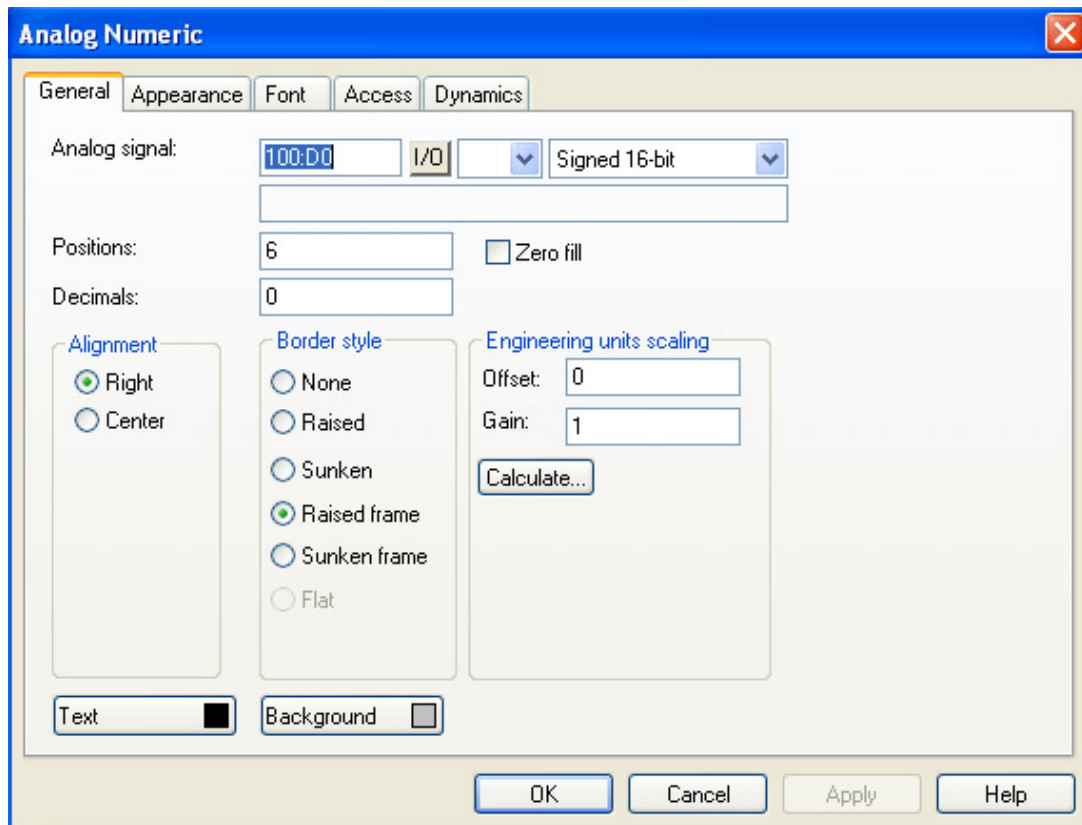
Details

The following example uses the Q series PLC driver “QnA/Qn-SERIES (E71)”.

The initial settings for this driver to communicate with a Qn PLC are shown below. The key setting being the IP address 192.168.1.133.



To display the data register D0 from the PLC at the above IP address with any an object such as an “Analogue Numeric” on the HMI all you need to enter is “D0”. To display the value of D0 from another PLC connected on Ethernet with the IP address 192.168.1.100, all you need is to enter 100:D0 as shown below.



Notes:

1. The first 3 digits of the IP address are the same as those set for the main target PLC.
2. Communications with the main target PLC must be established before any communications is possible.

Further Information

For further information please refer to "Controller help" in the HMI software E Designer and then look in the addressing section of the help.

Contact Details

Website: www.mitsubishi-automation.co.uk
Technical Support email: automation.support@meuk.mee.com
Telephone: 01707 288790
Fax: 01707 278991

Training

Training Website: <http://www.mitsubishi-automation.co.uk/training.html>
Training email: ctctraining.dept@meuk.mee.com
Telephone: 01707 278916
Fax: 01707 278991